

# Gallery Brochure

5208 Influence Way

Raleigh, 27616

\$475,000



**RESIDENTIAL / Detached**

**/ Single Family**

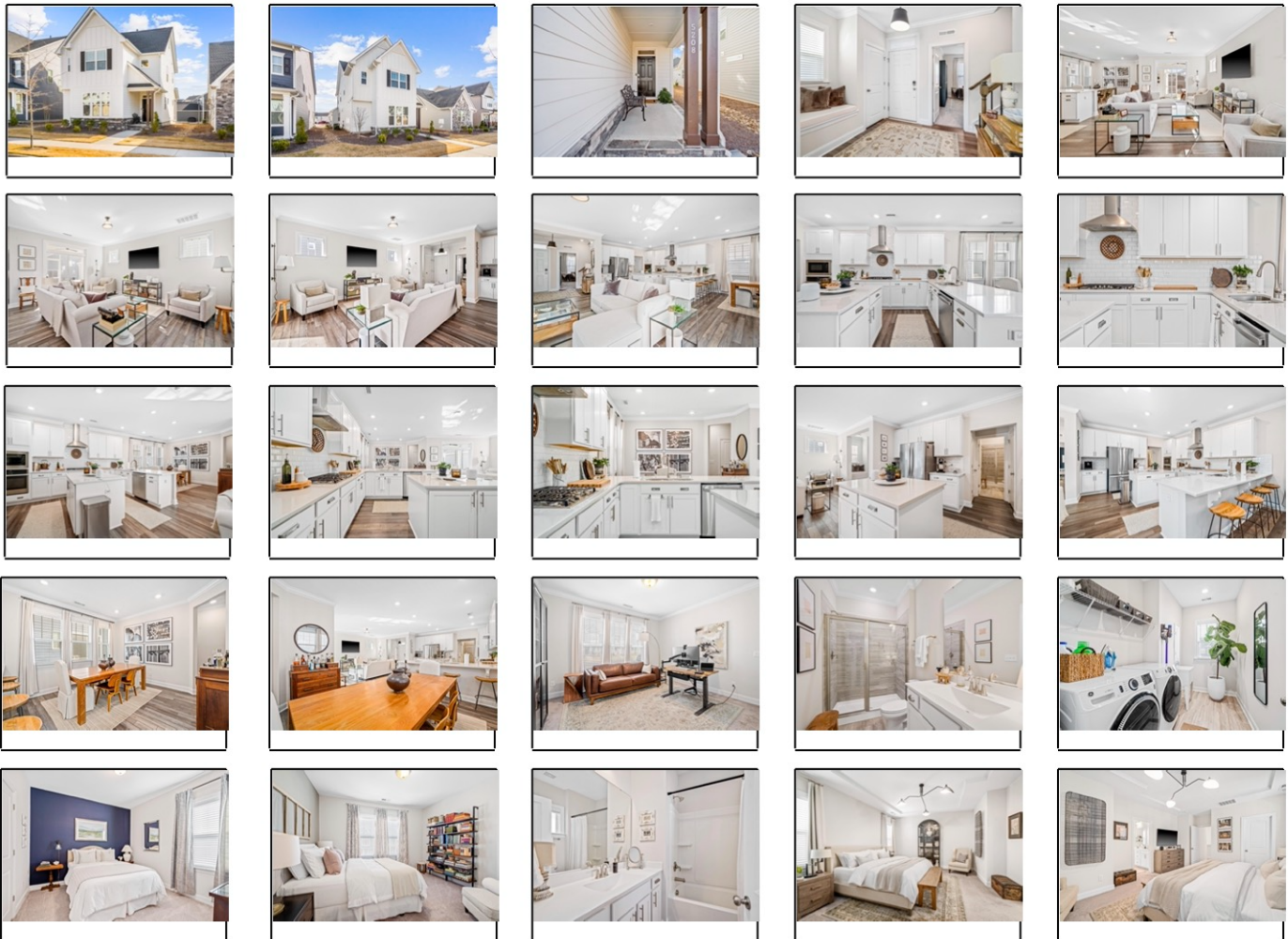
**Virtual Tour**

**MLS #** 2497614  
**Status** ACTIVE  
**County** Wake  
**SubArea (Discontinued)**  
**Subdiv** 5401 North  
**Nbrhd**  
**Bedrooms** 4  
**Full Baths** 3  
**Half Baths** 0  
**# of Rooms** 8  
**LvngAreaSF** 2,205  
**Year Built** 2020

**Design** 2 Story  
**Style** Craftsman  
**Exterior Finish** Fiber Cement, Stone Ext  
**Interior Features** 9 Ft Ceiling, Automation, Bookshelves, Cable TV Available, Lighting Control, Quartz Counter Tops, Tray Ceiling, Walk in Closet, Smooth Ceilings, High Speed Internet, Kitchen Island, Window Blinds  
**Basement** No  
**Acres** 0-.25 Acres  
**Lot Description** Landscaped  
**ElemSch1** Wake - River Bend  
**MidSch1** Wake - River Bend



**Remarks** Don't wait for new construction, this gently used, energy efficient, move-in-ready home is AVAILABLE TODAY! 5401 North is a large mixed-residential development perched right at I-540 for commutes that features a pool and playground, parklets and rear-entry garages, a coffee shop, brewery and childcare, access to the Neuse River Greenway as well as walkability to Wake Tech's North campus. Elementary and Middle schools are in the neighborhood! This home features a main floor guest suite with full bath, a large owner's suite with upstairs laundry, a deep garage with EV hookup already installed and a private screened porch. The upgraded kitchen features high-end stainless appliances and quartz tops over an eat-up peninsula and separate island. Just-built by Lennar, construction and materials used will ensure a long cycle of maintenance-free living.

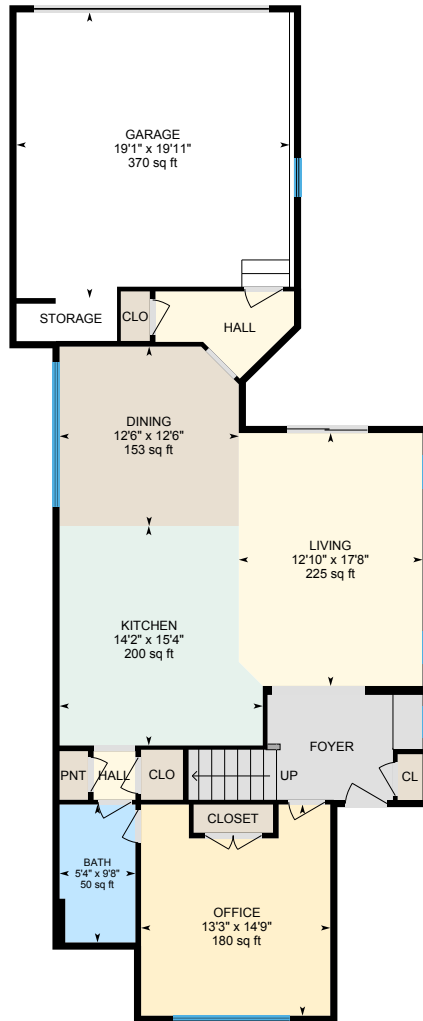


**Hugh Grist**  
**PrfPh: 919-601-8672**  
**hugh@gristrealty.com**  
**Grist Realty Inc**

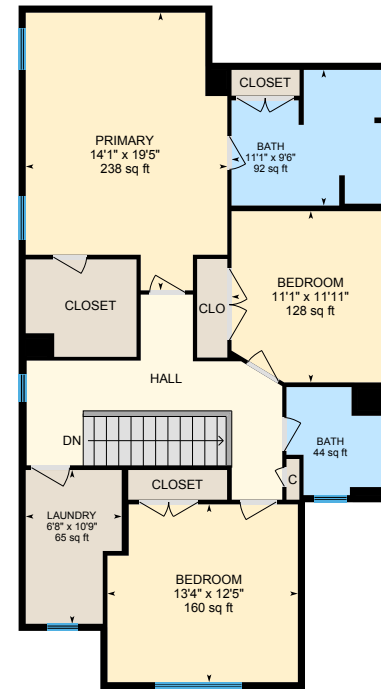


# 5208 Influence Way, Raleigh, NC

Main Building: Above Grade Finished Area 2205.46 sq ft



**Main Floor**  
Finished Area 1102.80 sq ft



**2nd Floor**  
Finished Area 1102.66 sq ft

